



# INSTALLATION INSTRUCTIONS



2019 GM SILVERADO/SIERRA 6.2L

PART NO. 19491

## BILL OF MATERIALS:



1. MUFFLER DELETE PIPE



WEAR SAFETY GLASSES



READ INSTRUCTIONS THOROUGHLY BEFORE INSTALLING PRODUCT



SPRAY LUBRICANT

To ease removal of existing exhaust components (especially on older vehicles) spray penetrating lubricant on all fasteners and hangers/insulators that will be loosened or removed and let soak before disassembly.

## HARDWARE KIT:

1. [2] 3.20" Clamp

## MINIMUM REQUIRED TOOLS:



15 mm



Hanger Tool (Or Pry Bar)



Saw or Other Cutting Tool

## MAGNAFLOW RECOMMENDS PROFESSIONAL INSTALLATION ON ALL THEIR PRODUCTS



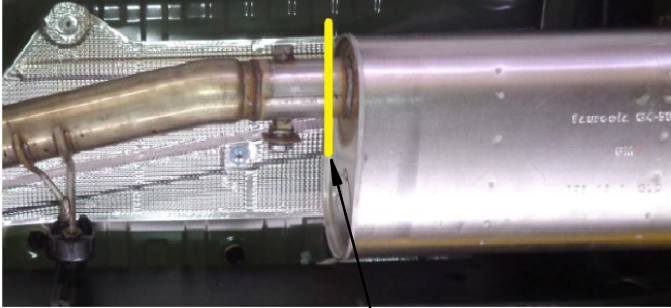
**WARNING:** When working on, under, or around any vehicle exercise caution. Please allow the vehicle's exhaust system to cool before removal, as exhaust system temperatures may cause severe burns. If working without a lift always consult vehicle manual for correct lifting specifications. Always wear safety glasses and ensure a safe work area. Serious injury or death could occur if safety measures are not followed.

**ATTENTION:** Always install any supplied band or U-bolt clamps to the proper torque specifications of 40-45 ft-lb for band clamps and 30-35 ft-lb for U-bolt clamps. Over tightening will result in the clamps breaking and will NOT be warranted by MagnaFlow.

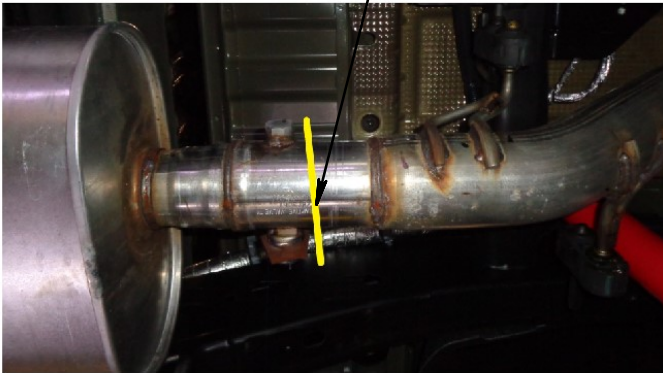
MAGNAFLOW: 1901 Corporate Centre Dr - Oceanside, CA 92056 | 1(800)990-0905  
Technical Support: 1(800) 959-9226 | Email: moreinfo@magnaflow.com

## INSTALLATION INSTRUCTIONS

**Step 1.** Mark cut points on OEM System. First cut point will be 0.25" in front of the OEM Muffler. The second cut point will be 5.50" to the rear of the muffler, cutting off the rear OEM Valve.



Approx Cut Location



**Step 2.** Cut off the OEM Muffler at the Cut Points from Step 1 and remove OEM Muffler

**Step 3.** Slip supplied torca clamps on to the MagnaFlow Delete Pipe. Then Slip the MagnaFlow Delete Pipe on to the OEM Exhaust at the cut points.



**Step 4.** Once a final position has been chosen for the new exhaust system, evenly tighten all clamps from front to rear using the torque specifications on page one of the instructions. Inspect all fasteners after 25-50 miles of operation and re-tighten if necessary.