

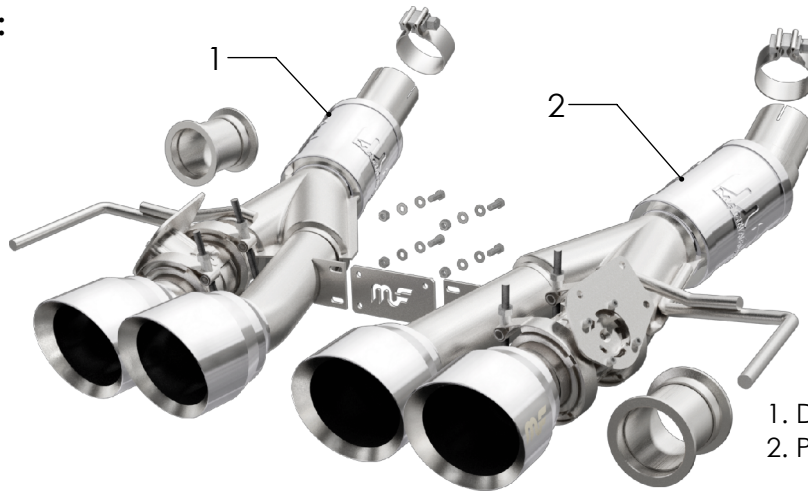


INSTALLATION INSTRUCTIONS



2014-2017 CHEVROLET CORVETTE 6.2L | PART NO. 19379

BILL OF MATERIALS:



- 1. D/S MUFFLER ASSY.
- 2. P/S MUFFLER ASSY.



WEAR SAFETY GLASSES



READ INSTRUCTIONS THOROUGHLY BEFORE INSTALLING PRODUCT



SPRAY LUBRICANT

To ease removal of existing exhaust components (especially on older vehicles) spray penetrating lubricant on all fasteners and hangers/insulators that will be loosened or removed and let soak before disassembly.

SHOP SUPPLIES:

HARDWARE KIT:

- 1. [2] 2.50" Clamp
- 2. [4] 1/4-20 Bolt
- 3. [4] 1/4-20 Nut
- 4. [4] 1/4-20 Lock Washer
- 5. [4] 1/4-20 Flat Washer
- 6. [1] Brace
- 7. [2] Delete Pipe

MINIMUM REQUIRED TOOLS:



12, 14, 15 mm



Hanger Tool (Or Pry Bar)



Cutting Device

MAGNAFLOW RECOMMENDS PROFESSIONAL INSTALLATION ON ALL THEIR PRODUCTS



WARNING: When working on, under, or around any vehicle exercise caution. Please allow the vehicle's exhaust system to cool before removal, as exhaust system temperatures may cause severe burns. If working without a lift always consult vehicle manual for correct lifting specifications. Always wear safety glasses and ensure a safe work area. Serious injury or death could occur if safety measures are not followed.

ATTENTION: Always install any supplied band or U-bolt clamps to the proper torque specifications of 40-45 ft-lb for band clamps and 70in-lb for V-band clamps. Over tightening will result in the clamps breaking and will NOT be warranted by MagnaFlow.

MAGNAFLOW: 1901 Corporate Centre Dr - Oceanside, CA 92056 | 1(800)990-0905
Technical Support: 1(800) 959-9226 | Email: moreinfo@magnaflow.com

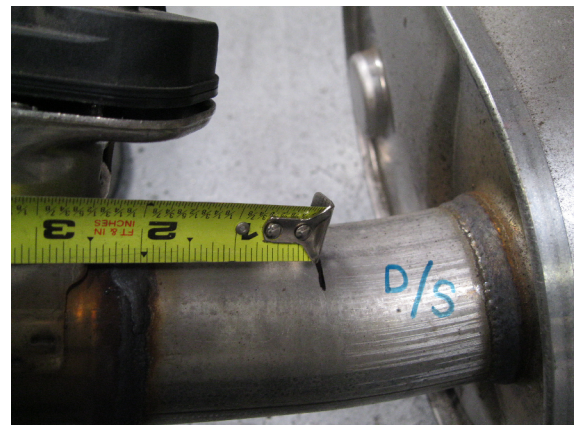
INSTALLATION INSTRUCTIONS



Step 1. To remove the OEM exhaust system you will first need to remove the rear valance. To do so you will need to remove The two 10mm bolts behind each reflector, the two 10mm bolts behind the license plate and two more 10mm bolts just underneath the license plate. Then you will need to remove the five 8mm bolts on both sides of the valance underside and remove it.



Step 2: Next if you have rear OE exhaust valves you will need to unplug the electrical connection on the rear Exhaust Valve Control Motors (Qty 2) located on the OEM exhaust assembly.



Step 3: Begin removing the OEM exhaust system by cutting both pipes going into the muffler assemblies. Measure and cut 2.0" driver side, 1.75" Passenger side, behind the exhaust valve welds as shown. Next extract the hangers from the rubber insulators and remove the OEM mufflers. Retain rubber insulators and as they will be used to install the new system

MAGNAFLOW: 1901 Corporate Centre Dr - Oceanside, CA 92056 | 1(800)990-0905
Technical Support: 1(800) 959-9226 | Email: moreinfo@magnaflow.com

INSTALLATION INSTRUCTIONS



Step 5: Once the old system is on the ground if your vehicle has valves transfer the servo motors from the factory valves to the Magnaflow system using the OEM fasteners. If your vehicle does not have OEM valves remove the pre-installed Magnaflow valves and replace them with the supplied Delete Pipes. Begin installation of the new system by attaching the Muffler Assemblies to the cut outlet pipes using the supplied 2.50" clamps. Loosely attach the connecting brace using the supplied fasteners as shown. Keep clamps and fasteners loose until final positioning.



Step 6: If your vehicle has valves re-connect the wiring harness plugs to the Valve motors, re-install the rear valance.



Step 7: Once a final position has been chosen for the new exhaust system, evenly tighten all clamps from front to rear using the torque specifications on page one of the instructions. Inspect all fasteners after 25-50 miles of operation and re-tighten if necessary.