

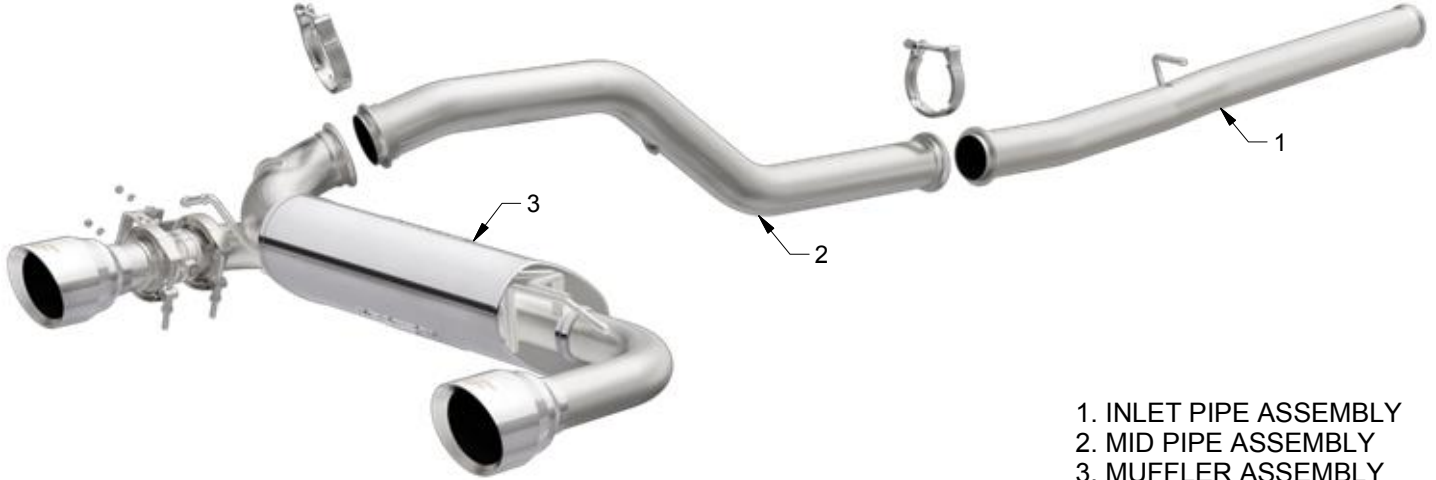


INSTALLATION INSTRUCTIONS



2016 - 2017 FORD FOCUS RS 2.3L | PART NO. 19363

BILL OF MATERIALS:



- 1. INLET PIPE ASSEMBLY
- 2. MID PIPE ASSEMBLY
- 3. MUFFLER ASSEMBLY



WEAR SAFETY GLASSES



READ INSTRUCTIONS THOROUGHLY BEFORE INSTALLING PRODUCT

SHOP SUPPLIES:



SPRAY LUBRICANT

To ease removal of existing exhaust components (especially on older vehicles) spray penetrating lubricant on all fasteners and hangers/insulators that will be loosened or removed and let soak before disassembly.

HARDWARE KIT:

- 1. [2] 3.00" V-Band Clamp
- 2. [3] M5 x 20mm Bolt
- 3. [3] M5 Nut
- 4. [3] M5 Lock Washer

MINIMUM REQUIRED TOOLS:



15mm, 13mm
10mm, 8mm



Hanger Tool
(Or Pry Bar)



Phillips, Flat Head



Sawzall or other cutting tool

MAGNAFLOW RECOMMENDS PROFESSIONAL INSTALLATION ON ALL THEIR PRODUCTS



WARNING: When working on, under, or around any vehicle exercise caution. Please allow the vehicle's exhaust system to cool before removal, as exhaust system temperatures may cause severe burns. If working without a lift always consult vehicle manual for correct lifting specifications. Always wear safety glasses and ensure a safe work area. Serious injury or death could occur if safety measures are not followed.

ATTENTION: Always install any supplied band or V-band clamps to the proper torque specifications of 40-45 ft-lbs for band clamps and 70 in-lbs for V-band clamps. Over tightening will result in the clamp breaking and will NOT be warranted by MagnaFlow.

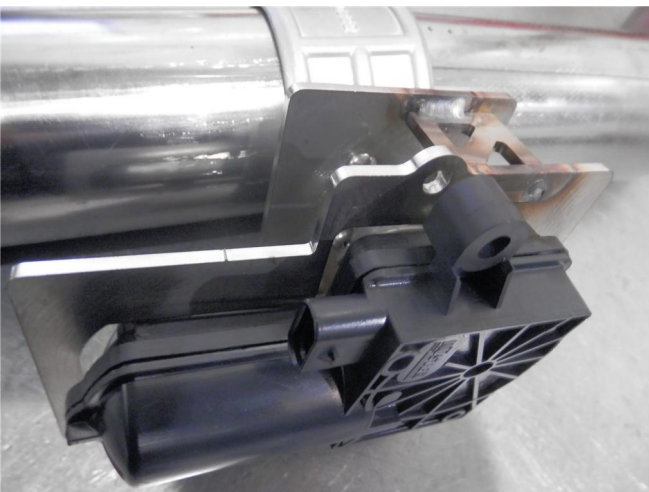
INSTALLATION INSTRUCTIONS



Step 1. Before removing the OEM exhaust you will first need to unplug the electrical connection on the exhaust valve control motor located on the OEM muffler assembly.



Step 2. To remove the OEM exhaust system begin by loosening the clamp located behind the front crossmember. Working from front to rear disengage all welded hangers from the rubber insulators. Retain all mounting hardware as it will be needed to mount your new MAGNAFLOW system.



Step 3. You will need to cut the OEM system at the Over Axle point to remove it. Once the OEM system has been removed transfer the exhaust valve motor to the Magnaflow system using the supplied hardware (M5 fasteners). The alignment spring on the motor will need to be engaged into the keyway slot of the new valves.

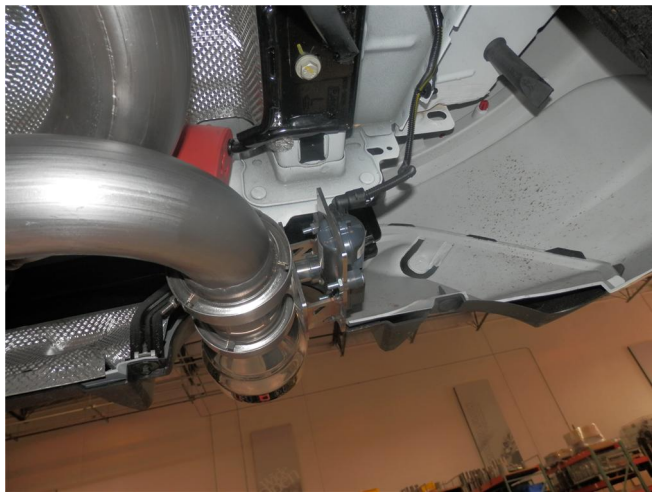


Step 4. Loosely Install the Inlet Pipe Assembly to the exhaust outlet using the OE clamp. Engage the welded hanger to the rubber insulator.



Step 5. Next attach the Mid Pipe assembly to the Inlet Pipe using the supplied 3.00" V-clamp and engage the hanger into the rubber insulator.

INSTALLATION INSTRUCTIONS



Step 6. Loosely install the Muffler Assembly using the supplied clamp. Attach the welded hangers to the rubber insulators. Re-attach the electrical connector to the exhaust valve motor.



Step 7. Once a final position has been chosen for the new exhaust system, evenly tighten all clamps from front to rear using the torque specifications on page one of the instructions. Inspect all fasteners after 25-50 miles of operation and re-tighten if necessary.