



INTAKE SYSTEMS FOR VEHICLES LISTED ARE 50 STATE LEGAL. SEE KNFILTERS.COM FOR CARB STATUS ON EACH PART FOR A SPECIFIC VEHICLE.

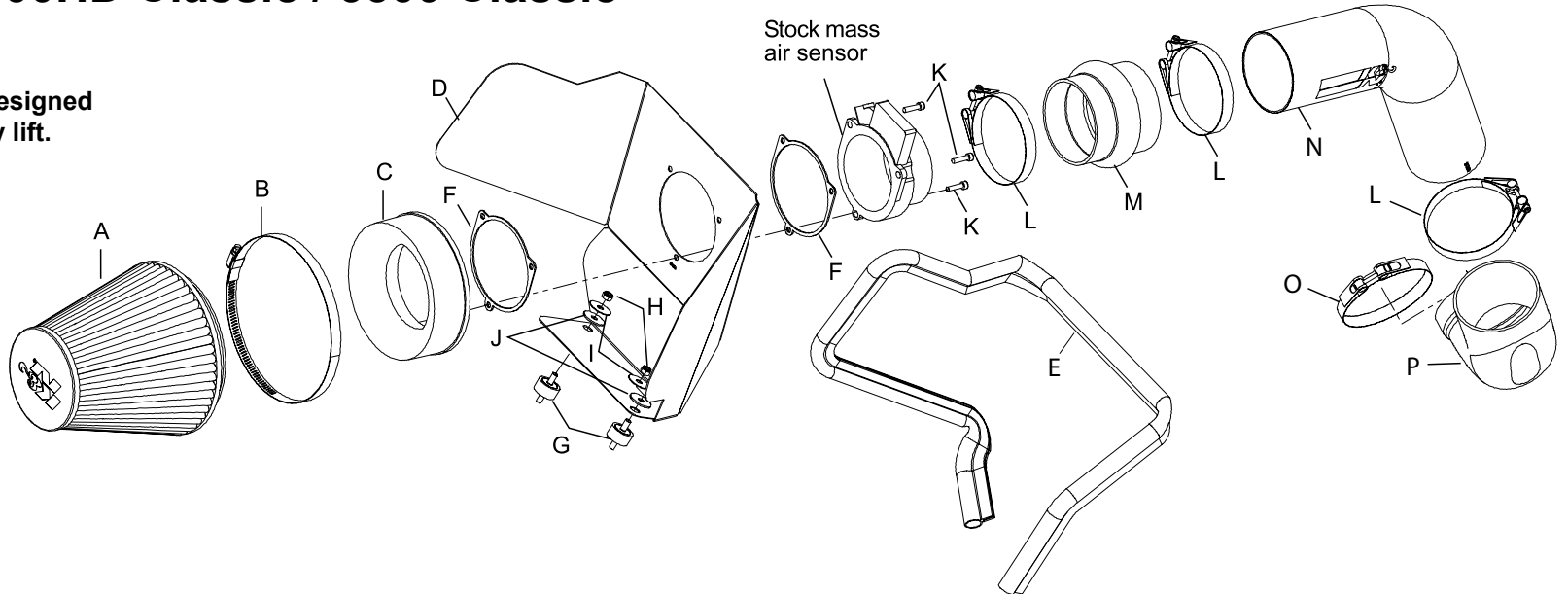
INSTALLATION INSTRUCTIONS

77-3031KP
CHEVROLET / GMC
2001-06 Silverado 2500HD / 3500
2001-06 Sierra 2500HD / 3500
2007 Silverado 2500HD Classic / 3500 Classic
2007 Sierra 2500HD Classic / 3500 Classic
V8-6.0L

TOOLS NEEDED:

- Flat Blade Screwdriver
- Phillips Screwdriver
- Pliers
- 3mm Allen Wrench
- 4mm Allen Wrench
- 10mm wrench
- Ratchet
- Extension
- 10mm Socket

NOTE: This kit was not designed to fit vehicles with a body lift.



PARTS LIST:

Description	Qty.	Part #	Description	Qty.	Part #	Description	Qty.	Part #
A AIR FILTER	1	RU-5046	G 6MM RUBBER MOUNTED	2	07027	M SILICONE HUMP HOSE	1	084056
B HOSE CLAMP, #104	1	08697	H 6MM NYLOCK NUT, SS	2	07512	N INTAKE TUBE	1	27353AKP
C MASS AIR ADAPTER	1	08783A	I FENDER WASHER	2	08160	O HOSE CLAMP, #64	1	08645
D HEAT SHIELD	1	07316	J RUBBER WASHER	2	21685	P SILICONE ANGLED HOSE	1	084053
E EDGE TRIM, 3/4" BULB, 48"	1	102485	K 5MM ALLEN BOLT, 20MM L	3	08320			
F GASKET	2	09033	L HOSE CLAMP, #56	3	08620			

If you need any assistance please call 1-800-858-3333 to speak with a representative in our Customer Service Center before returning the product.

NOTE: FAILURE TO FOLLOW INSTALLATION INSTRUCTIONS AND NOT USING THE PROVIDED HARDWARE MAY DAMAGE THE INTAKE TUBE, THROTTLE BODY AND ENGINE.

TO START:

1. Turn off the ignition and disconnect the negative battery cable.
NOTE: Disconnecting the negative battery cable erases pre-programmed electronic memories. Write down all memory settings before disconnecting the negative battery cable. Some radios will require an anti-theft code to be entered after the battery is reconnected. The anti-theft code is typically supplied with your owner's manual. In the event your vehicles' anti-theft code cannot be recovered, contact an authorized dealership to obtain your vehicles anti-theft code.



2. Remove the bolt that secures the engine cover, then, remove the engine cover as shown.



3. Disconnect the mass air sensor electrical connection as shown.



4. Unclip the radiator hose from the stock intake tube as shown.



5. Loosen the hose clamps at the throttle body and at the mass air sensor, then remove the stock intake tube as shown.



6. Pull firmly upwards to remove the air cleaner assembly as shown.
NOTE: K&N Engineering, Inc., recommends that customers do not discard factory air intake.



7. Loosen the hose clamp on the air cleaner then remove the mass air sensor as shown.



8. Remove the two stock air cleaner support tray bolts as shown.



9. Install the rubber mounted studs as shown and tighten firmly by hand.



10. Install the edge trim onto the heat shield as shown.



11. Using the provided hardware assemble the mass air adapter, heat shield, gaskets and the stock mass air sensor as shown.



12. Install the heat shield onto the rubber mounted studs as shown.



13. Secure the heat shield to the rubber mounted studs using the provided hardware but do not tighten at this time.



14. Install the silicone angled hose and hose clamps onto the throttle body but do not tighten at this time.



15. Install the silicone step hump hose and hose clamps onto K&N® intake tube as shown.



16. Install the K&N® intake tube into the angled hose, then, slide the other end into the hump hose. Adjust everything for best fit and clearance and tighten all hose clamps as shown.



17. Tighten the hardware on the heat shield as shown.



18. Install the K&N® air filter onto the mass air adapter and secure it with the provided hose clamp as shown.



19. Reconnect the mass air sensor electrical connection as shown.



20. Reinstall the engine cover and secure it with the stock hex bolt.



21. Reconnect the negative battery cable and double check to make sure everything is tightened and properly positioned before starting the vehicle.

22. The C.A.R.B. exemption sticker, (attached), must be visible under the hood so that an emissions inspector can see it when the vehicle is required to be tested for emissions. California requires testing every two years, other states may vary.

23. It will be necessary for all K&N® high flow intake systems to be checked periodically for realignment, clearance and tightening of all connections. Failure to follow the above instructions or proper maintenance may void warranty.

24. **NOTE:** Most General Motors vehicles have the Vehicle Emissions Certification Information (VECI) label affixed to the air filter box. In order to be compliant with California emissions laws, the label **MUST** remain in the engine compartment. If the Vehicle Emission Control Information label is removed during modification, a new replacement label must be obtained and installed in a readily visible position in the engine compartment. The label shall not be affixed to any equipment which is easily detached from the vehicle. We recommend that the label is affixed to the underside of the hood adjacent to the hood latch. The label is Vehicle Identification Number dependent and can be ordered from the vehicle dealership. In order to receive the proper decal please bring your VIN with you. Failure to have the VECI under the hood may result in failure of a pre-registration smog test.

ROAD TESTING:

1. Start the engine with the transmission in neutral or park, and the parking brake engaged. Listen for air leaks or odd noises. For air leaks secure hoses and connections. For odd noises, find cause and repair before proceeding. This kit will function identically to the factory system except for being louder and much more responsive.

2. Test drive the vehicle. Listen for odd noises or rattles and fix as necessary.

3. If road test is fine, you can now enjoy the added power and performance from your kit.

4. K&N Engineering, Inc., suggests checking the air filter element periodically for excessive dirt build-up. When the element becomes covered in dirt (or once a year), service it according to the instructions on the Recharger® service kit, part number 99-5050 or 99-5000.

INTAKE SYSTEMS FOR VEHICLES LISTED ARE 50 STATE LEGAL. SEE KNFILTERS.COM FOR CARB STATUS ON EACH PART FOR A SPECIFIC VEHICLE.