



INTAKE SYSTEMS FOR VEHICLES LISTED ARE 50 STATE LEGAL. SEE KNFILTERS.COM FOR CARB STATUS ON EACH PART FOR A SPECIFIC VEHICLE.

INSTALLATION INSTRUCTIONS

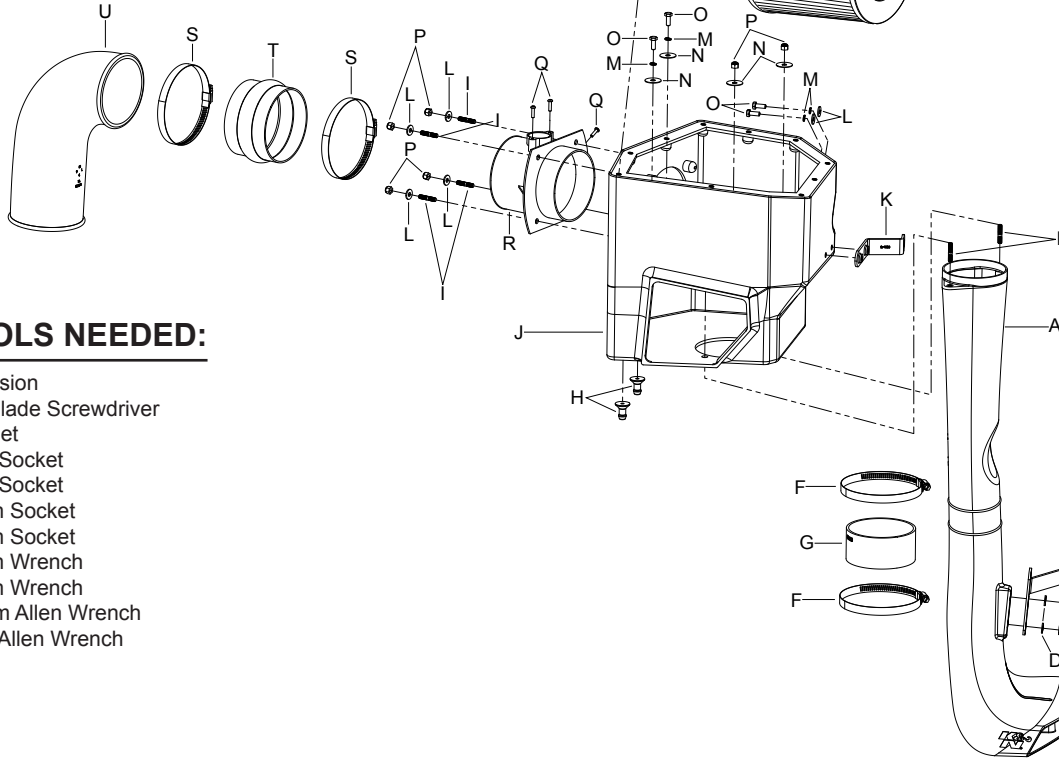
57-1562

DODGE

2010-12 Ram 2500/3500

L6-6.7L DSL

NOTE: This kit was not designed to fit vehicles with a body lift.



PARTS LIST:

Description	Qty.	Part #
A	Tube	1 087242
B	Bolt; 8MM-1.25 X 16MM	2 07844
C	Washer; 8mm Spring (Wave)	2 08239
D	Washer; 8mm, Flat SS	2 08272
E	Bracket; "L," STL TK/PC	1 083157
F	Hose Clamp #64 Stainless	2 08645
G	Hose; 4" ID X 2" L Reinforced	1 08761
H	Nipple, Heat Shield Mount	2 8-186-1
I	Stud, 6M-1 X 30 DBL Ended	6 1-107
J	Air Box	1 087243
K	Bracket; "Z," STL, TK/PC	1 083145
L	Washer; 6mm Flat, SS	6 08269
M	Washer, M6 Split Lock Zinc	4 1-3025
N	Washer; 1"D X 1/4 Hole	4 08160
O	Bolt; 6MM-1.00 X 16mm, SS	4 07812
P	Nut; 6mm Nylock, Hexhead	6 07512
Q	Screw; M4-.7 X 16mm, SS	3 07793
R	Adapter; MAF Housing	1 088036
S	Hose Clamp #72	3 08671
T	Hose; 4-1/2" ID X 3" L Hump	1 08695
U	Tube	1 087241
V	Air Filter	1 RC-5283
W	Lid, Alum., TB/PC	1 074080-1
X	Bolt; M5 -0.8 X 12MM B/H	10 07734
Y	Washer; 5MM Flat SS	10 08212

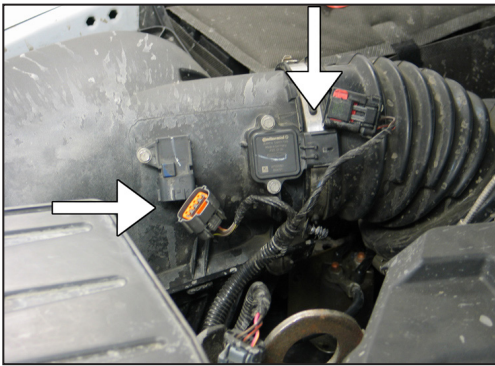
TOOLS NEEDED:

- Extension
- Flat Blade Screwdriver
- Ratchet
- 7mm Socket
- 8mm Socket
- 10mm Socket
- 13mm Socket
- 10mm Wrench
- 13mm Wrench
- 2.5mm Allen Wrench
- 3mm Allen Wrench

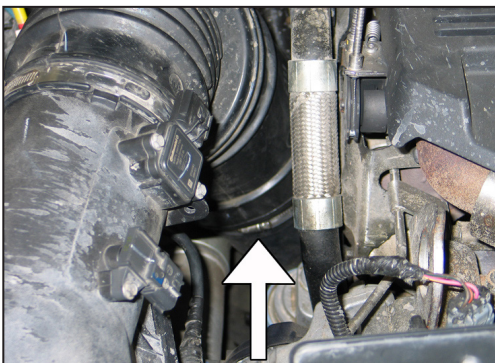
NOTE: FAILURE TO FOLLOW INSTALLATION INSTRUCTIONS AND NOT USING THE PROVIDED HARDWARE MAY DAMAGE THE INTAKE TUBE, THROTTLE BODY AND ENGINE.

TO START:

1. Turn off the ignition and disconnect the negative battery cable.
NOTE: Disconnecting the negative battery cable erases pre-programmed electronic memories. Write down all memory settings before disconnecting the negative battery cable. Some radios will require an anti-theft code to be entered after the battery is reconnected. The anti-theft code is typically supplied with your owner's manual. In the event your vehicles' anti-theft code cannot be recovered, contact an authorized dealership to obtain your vehicles anti-theft code.



2. Disconnect the mass air sensor and temperature sensor electrical connections, then unhook the wiring harness from the air box.



3. Loosen the hose clamp securing the intake resonator to the turbo inlet hose.



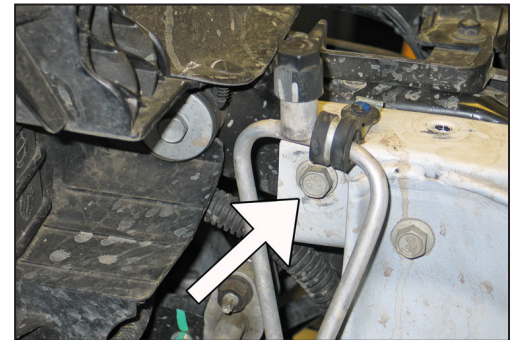
4. Release the two clips securing the air box lid; remove the air box lid and intake tube from the vehicle.



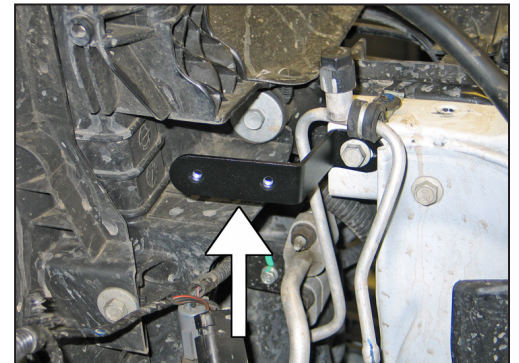
5. Remove the bolt that secures the lower air box to the core support.



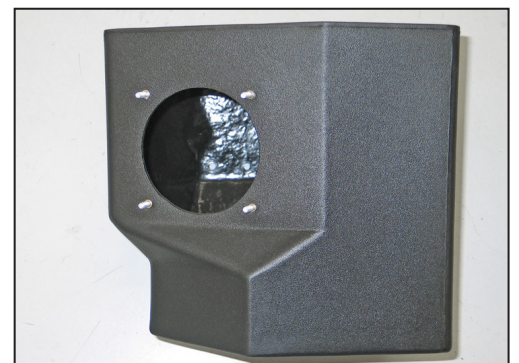
6. Lift up the lower air box to dislodge it from the mounting grommets and then remove it from the vehicle.
NOTE: K&N Engineering, Inc., recommends that customers do not discard factory air intake.



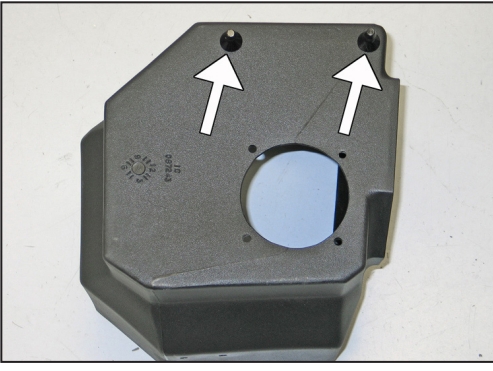
7. Remove the core support bolt shown.
NOTE: This bolt will be reused in the next step.



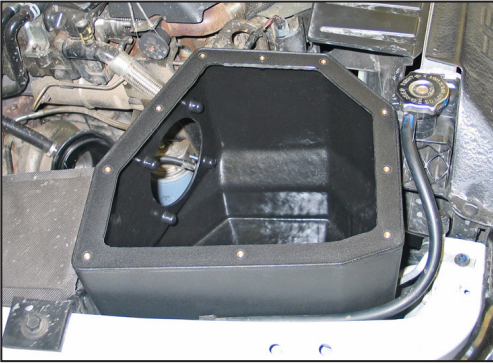
8. Install the air box mounting bracket (083145) onto the core support using the bolt removed in the previous step.
NOTE: Do not completely tighten the bolt at this time.



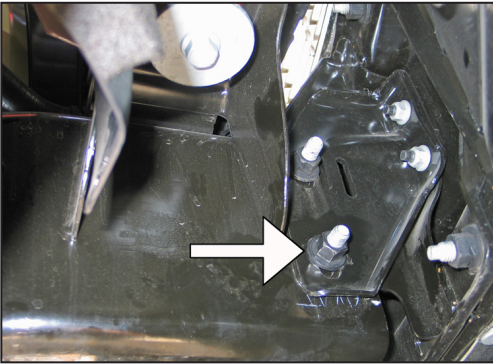
9. Install four of the provided 6mm studs into the K&N® air box as shown.
NOTE: Install the studs so the shorter threads are threaded into the air box inserts.



10. Install the two provided air box mounts to the bottom of the air box and secure with the provided hardware.



11. Install the air box so the mounting studs insert into the air box mounting grommets, then secure the air box to the mounting bracket that was installed in step #8. Tighten the mounting bracket bolts.



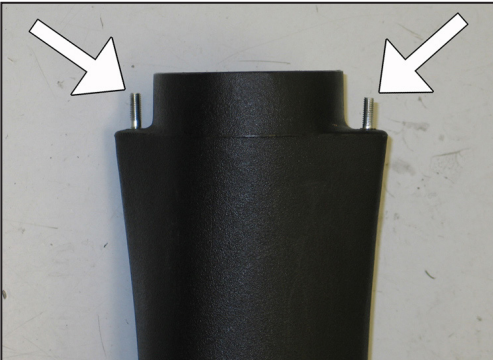
12. Remove the passenger side lower bumper mounting bracket nut shown.

NOTE: This nut will be reused.

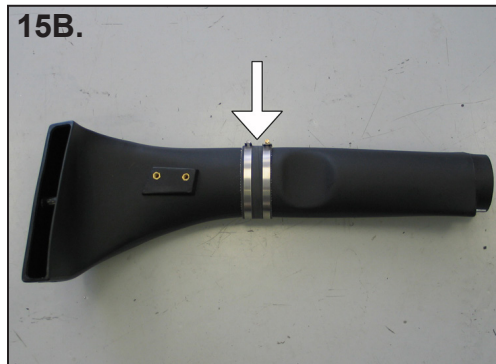


13. Install the tube mounting bracket (083157) onto the stud as shown and secure with the factory nut removed in the previous step.

NOTE: Do not completely tighten at this time.

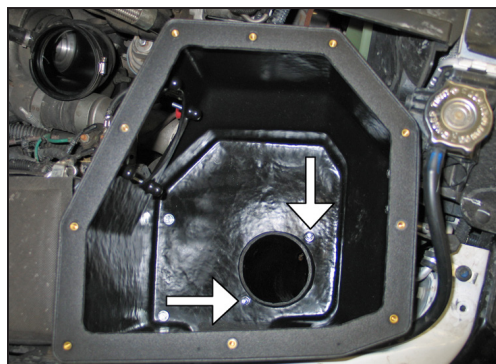


14. Install the two remaining 6mm studs into the fresh air intake scoop so the shorter threads are threaded into the inserts as shown.



15. Guide the fresh air intake scoop up in front of the inner fender into the air box and align with the mounting bracket installed in step 13. Secure the scoop to the mounting bracket with the provided hardware. Due to the different front bumper lower valence styles available, it may be necessary to cut the 1.5" section between the beads out of the scoop and join the two sections with the provided silicone hose and hose clamps as shown. Set the fresh air intake scoop into position. If there is a 1.5" gap between the scoop and the lower valence then the scoop will need to be cut.

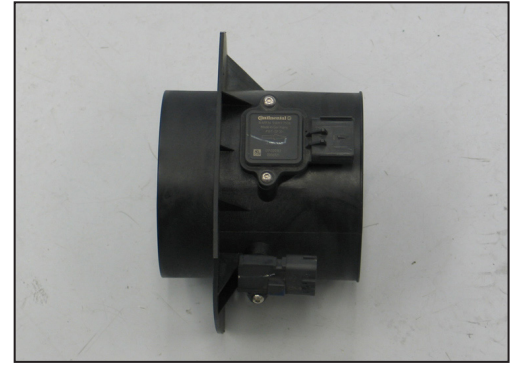
NOTE: Do not completely tighten at this time. DURING SEVERE INCLEMENT WEATHER, HEAVY SNOW or DEEP WATER FORGING, IT IS RECOMMENDED THAT THE FRESH AIR INTAKE SCOOP BE REMOVED TO PREVENT WATER/ SNOW FROM ENTERING THE AIR BOX.



16. Secure the top of the fresh air intake scoop to the airbox with the provided hardware.



17. Remove the screws securing the mass air sensor and temperature sensor to the air box.

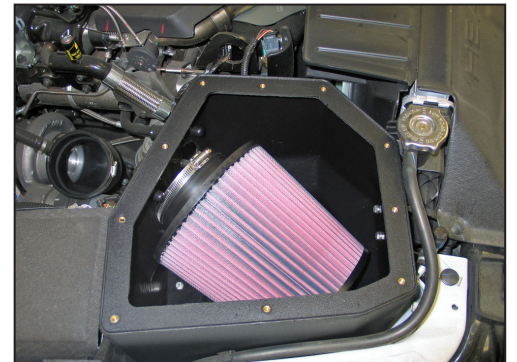


18. Install the mass air sensor and temperature sensor into the K&N mass air sensor housing using a twisting motion to aid installation; secure with the provided hardware.

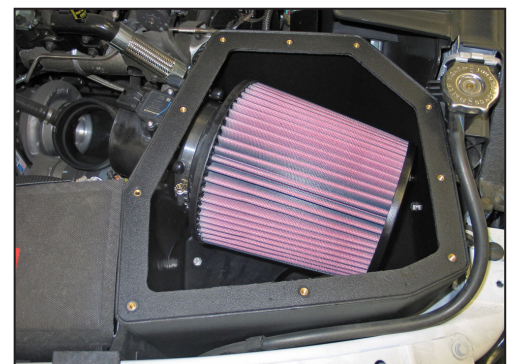


19. If the vehicle is going to be operated in extreme wet or snow conditions, it is recommended that a Drycharger air filter wrap, sold separately, be installed onto the K&N air filter.

NOTE: Drycharger air filter wrap; part # RC-5112DK is available to purchase separately. To learn more about Drycharger filter wraps or look up color availability please visit <http://www.knfilters.com>.



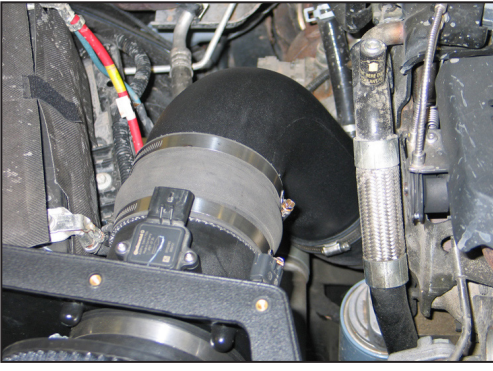
20. Set the K&N air filter into the K&N air box as shown.



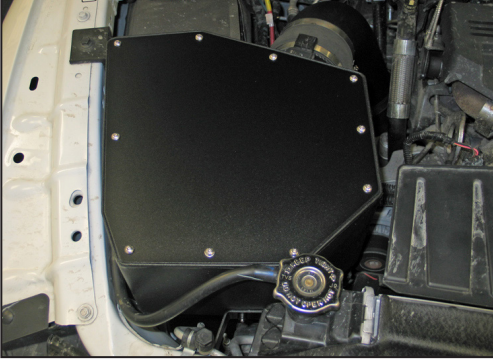
21. Install the K&N mass air housing onto the mounting studs and into the K&N air filter inlet. Secure the housing to the studs with the provided hardware and then secure the air filter with the provided hose clamp.



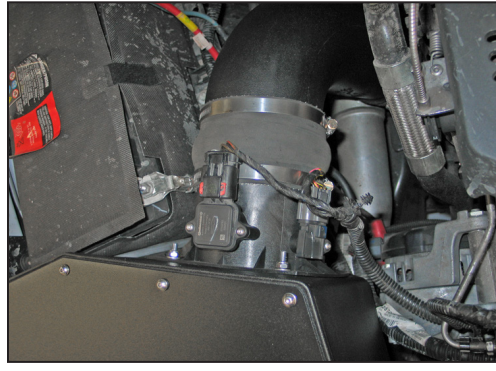
22. Install the provided silicone hose (08695) and hose clamps onto the K&N intake tube as shown. **NOTE: Do not completely tighten at this time.**



23. Install the K&N® intake tube into the factory turbo inlet hose and then connect the K&N® hose to the K&N® mass air sensor housing. Secure the intake tube with the hose clamps provided.



24. Install the air box lid and secure with the provided hardware.



25. Reconnect the mass air sensor and temperature sensor electrical connections.

26. Reconnect the vehicle's negative battery cable. Double check to make sure everything is tight and properly positioned before starting the vehicle.

27. The C.A.R.B. exemption sticker, (attached), must be visible under the hood so that an emissions inspector can see it when the vehicle is required to be tested for emissions. California requires testing every two years, other states may vary.

28. It will be necessary for all K&N® high flow intake systems to be checked periodically for realignment, clearance and tightening of all connections. Failure to follow the above instructions or proper maintenance may void warranty.

ROAD TESTING:

1. Start the engine with the transmission in neutral or park, and the parking brake engaged. Listen for air leaks or odd noises. For air leaks secure hoses and connections. For odd noises, find cause and repair before proceeding. This kit will function identically to the factory system except for being louder and much more responsive.

2. Test drive the vehicle. Listen for odd noises or rattles and fix as necessary.

3. If road test is fine, you can now enjoy the added power and performance from your kit.

4. K&N Engineering, Inc., requires cleaning the intake system's air filter element every 100,000 miles. When used in dusty or off-road environments, our filters will require cleaning more often. We recommend that you visually inspect your filter once every 25,000 miles to determine if the screen is still visible. When the screen is no longer visible some place on the filter element, it is time to clean it. To clean and re-oil, purchase our filter Recharger® service kit, part number 99-5050 or 99-5000 and follow the easy instructions.

INTAKE SYSTEMS FOR VEHICLES LISTED ARE 50 STATE LEGAL. SEE KNFILTERS.COM FOR CARB STATUS ON EACH PART FOR A SPECIFIC VEHICLE.