

POWERFLEX®

PART NUMBER

PFR5-422

DESCRIPTION

REAR SUBFRAME REAR BUSH

INSTALLATION GUIDE

Contents (parts per pack):

2 x Polyurethane A UPPER Bushes
2 x Aluminium

2 x Polyurethane B LOWER Bushes
2 x Grease

Please read the complete fitting instructions and check package components before fitment. These fitting instructions are to be used as a guide and in conjunction with workshop manual.

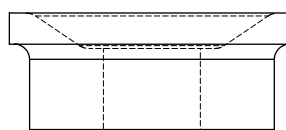
It is recommended that:

- all work to be carried out by a licensed technician;
- all safety precautions adhered to;
- wheel alignment to be checked and adjusted as required after any suspension work.
- All fasteners must be tensioned to manufacturer's torque settings.

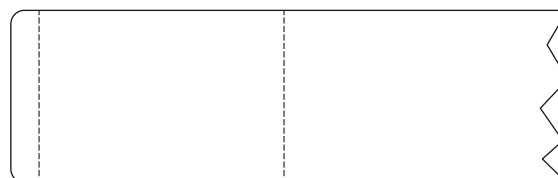


Fitting Instructions:

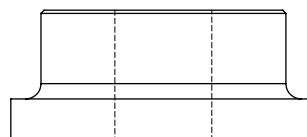
1. Remove the original bush from the bore in subframe.
2. Clean any dirt and corrosion from the bore in the subframe. Remove any sharp edges from the bore.
3. Fit polyurethane A UPPER bush into bore of the subframe on the topside (as shown in Figure 1).
4. Fit polyurethane B LOWER bush into bore of the subframe on the bottom (as shown in Figure 1). This fits against the original washer.
5. Apply supplied grease into bore and around the mounting faces of each bush.
6. Fit aluminium sleeve into bush.
7. Tension all hardware to manufacturers recommended torque settings.



Polyurethane A UPPER Bush



Subframe



Polyurethane B LOWER Bush



Aluminium Sleeve

Figure 1:
Exploded Diagram