



PART NUMBER
PFF19-601, PFF19-902

DESCRIPTION
FRONT WISHBONE FRONT BUSH

INSTALLATION GUIDE

Product description:

These instructions are to aid the fitting of POWERFLEX polyurethane spherical bearing bushes that are fitted with a dust cover to prevent contaminant ingress.

Contents (parts per pack):

- 2 x Polyurethane spherical bearing bushes
- 4 x Polyurethane dust covers
- 4 x Stainless steel tapered sleeves
- 1 x Grease



Please read the complete fitting instructions and check package components before fitment. These fitting instructions are to be used as a guide and in conjunction with workshop manual.

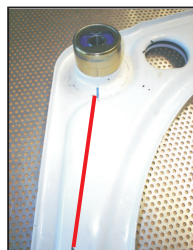
It is recommended that:

- all work to be carried out by a licensed technician;
- all safety precautions adhered to;
- wheel alignment to be checked and adjusted as required after any suspension work.

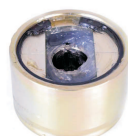
All fasteners must be tensioned to manufacturer's torque settings.

Fitting Instructions:

1. Remove the original bush from the arm, clean any dirt and corrosion from the bore in the arm.
2. Press the bush into the arm with the chaffered edge entering the arm first. Align the score line on each bush parallel to the inside of the wishbone. Check the stainless steel sleeves are not in the bush before pressing the bush into the arm and be sure to apply pressure to the outer shell of the bush.
3. Apply some of the supplied grease into and around the spherical bearing.
4. Depress each of the dust covers and place onto both faces of each bush. Push the sleeves through the dust cover and into the bore in the bush.
5. Ensure that a good seal is made between the dust cover and the bush, wipe away any excess grease and re-fit the arm to the car.



Align score line on bush
parallel to inside of wishbone



Press bush
into arm



Depress
dust cover



Fit onto
bush



Insert
sleeve