

BALMAR[®]
DC CHARGING SOLUTIONS

SG200

BATTERY MONITOR

Installation & Operation Manual

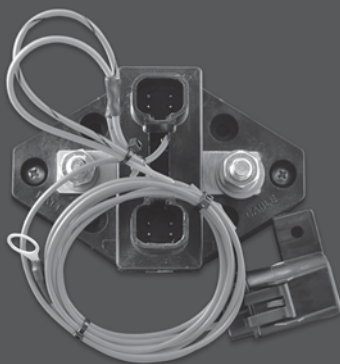


Table of Contents

Installation Overview	4
Introduction	6
What is a Battery Monitor, and Why is it Important?	6
Installation	8
Included in the box	8
Installing the SmartShunt and Display	8
Adding an additional device to the SmartLink Network	13
Setting up multiple SmartShunts on one bank	13
SG200 Layout and Operation	14
Single Button Operation	14
Real-Time Data	15
Setting up the SG200 for the First Time	16
Initial Accuracy	17
Display	17
History	18
BAT TYPE - Selecting the Battery Chemistry	19
CAPACITY - Selecting a Battery Design Capacity	20
CHARGING - Charge Termination and Charge Efficiency	21
Advanced Settings	23
Faults and Alerts	24
Alerts	24
Faults	25
Comparing Faults and Alerts	26
Appendix:	
Specifications	27
Part Numbers	28
Fault Thresholds	29
Converting Reserve Capacity to Amp Hours	29
Factors Affecting Battery Life	30
State of Health	30
Sulfation and shedding	30
Cycle Life	31
Partial State of Charge (PSOC) Cycling	31
Balmar Warranty	32

Safety Precautions

1. Take time to read the manual. Equipment damage and possible injuries may result from an incomplete understanding of the installation and operation of the SG200 Battery Monitor. If you are unfamiliar with marine electrical systems, consult with a qualified marine electrician.
2. Always disconnect your battery banks and ensure that switches are “OFF” prior to installing the SmartShunt. No current should be flowing when the SmartShunt is installed!
3. Remove all metal jewelry while working on your electrical system, to avoid any completing a circuit with these items, especially bracelets, rings or handing necklaces..
4. Wear ANSI-approved safety eye-wear and protective gear.
5. DO NOT attempt to modify the SmartShunt or Display. Modifications could result in damage to your charging system and will void your warranty.
6. DO NOT attempt installation while using alcohol or medication that could impair your judgment or reaction time.
7. Always use the right tool for the job. Improper tool use may damage the shunt, gauge or your vessel, and could result in personal injury.
8. If installing in an engine compartment with a gasoline engine, proper ventilation practices must be used to ensure no explosive gases exist before installation.
9. If installing a compartment with batteries, the compartment must be properly ventilated to ensure no build-up of explosive gases prior to installation.

NOTE: If a SG200 is used to monitor a starting-only bank using the cable posts, and not the voltage-only leads, then an accurate state of health may not be determined or maintained.

The diagram above shows a typical installation with one house battery bank, and two auxiliary or engine start batteries.

If multiple displays or shunts are being installed, they may simply be daisy-chained with additional SmartLink communication cables.

Negative leads from auxiliary batteries to the shunt are not needed in a common-ground installation.

CAUTIONS & WARNING: DO NOT install any of the positive leads without proper fusing!!!

NOTE: The fuse holder is shipped without the fuse installed. Install the fuse AFTER completely connecting all of the wires/cables, and all other installation steps.

The SG200 will scale automatically to the voltage of commonly used battery systems (12v,24v,36v,48v.)

Initial configuration of the SmartShunt consists of setting the following parameters.

1. Battery Chemistry
2. Battery Capacity
3. Charge Termination Current and Voltage

For complete instructions, follow the rest of this manual.

Introduction

The SG-200 is a battery monitoring system. Its purpose is to provide the user with continuous information on various parameters of a battery or battery-bank, and of direct current (DC) usage in the system.

Specifically, it can show:

Parameter	Unit
Voltage	Volts (V)
State of Charge (SoC)	Percent (%)
State of Health (SoH)	Percent (%)
Current (A)	Amperes (a)
Time Remaining	Hours: Minutes
Voltages for two separate Auxiliary batteries	Volts (V)

What is a battery monitor, and why is it important?

Who would argue that it is not good to know how much power is left in a battery? It is like a fuel gauge, and you would not drive a car or boat without knowing how much fuel is remaining in the tank.

Enter the battery monitor. The most important job of a battery monitor is to report on the State of Charge of a battery or battery bank. The State of Charge (SoC) is a percentage value, showing what percentage of the battery's capacity is remaining.

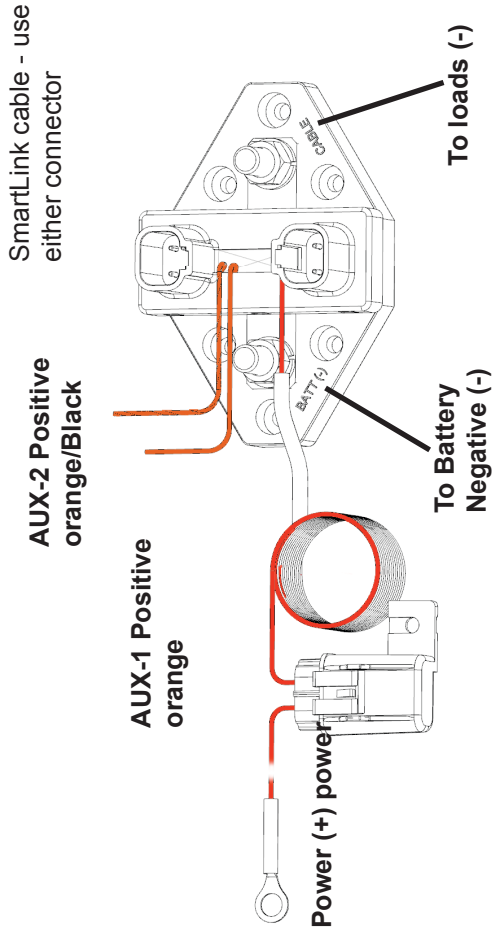
The SG200 very accurately calculates the State of Charge, and it does so by incorporating a new feature: State of Health (SoH). State of Health is another percentage value, that compares the design capacity of a battery, or the capacity the battery's manufacture says it should be when new, with it's actual capacity, which degrades over time as a battery ages.

Accurate and continuous measurement of SoC and SoH is a breakthrough in battery monitoring. As the battery ages, the monitor does not get less and less accurate. Instead, the SoC value is always a percentage of the calculated capacity taking into account the aging and other detrimental effects on a battery's capacity.

The SG200 also is unaffected by other issues inherent in all other shunt-based systems, like accuracy drift over multiple partial state of charge cycles. Simply put, traditional shunt-based products need to reach 100% charge each cycle.

Inaccuracy is introduced that is multiplied with each additional cycle that does not reach full 100% charge.

For more information about issues that effect battery health and capacity, read the Appendix entitled “Factors Affecting Battery Life”



Installation

Included in the box

The following parts are included in the standard SG200 System Kit.

- (1) SmartShunt, with 60" fused wire positive wire.
- (1) Color Display
- (1) Display mounting bracket and nut
- (1) 10m SmartLink Cable
- (1) SmartLink Deutsch-style connector kit, with a connector and wedgelock.
- (1) Fuse for positive wire
- (1) This manual

Not Included in the box

1. Mounting fasteners for the SmartShunt. These should be #8 sized cap-head bolts or screws, depending on the mounting surface.
2. Additional fuse assemblies for the Aux-1 and Aux-2 voltage leads. ABYC rules specify that circuit protection (Fuses) should be located within 6" of the power source.

The SmartShunt should be located as close to the battery as possible, preferably within 12 inches.

The SmartShunt should be mounted to a firm surface in a dry location. All cables need to be sized for the maximum current flow. Undersized cables can present a fire hazard and adversely affect the performance of the SmartShunt.

Tools needed:

- 9/16 wrench or socket and wrench.
- Any tools required for owner-supplied mounting fasteners.
- 2.0625", or 53mm hole saw suitable for the mounting surface, if a suitable a display hole does not already exist.

Installing the SmartShunt and Display

CAUTION: High currents may be carried by the battery cables attached to the SmartShunt. If you are unsure of any part of the installation, refer to a qualified installer for their assistance.

Although the SmartShunt uses watertight connectors for the SmartLink cable, the overall design is not waterproof. The SmartShunt must be installed in a dry location. The Display is IP65 rated from the front when installed properly, but is NOT watertight from the rear to allow for condensation to exit the Display.

NOTE: Should the LCD need cleaning, it can be done with water and a clean cloth. No chemicals of any type should be used

The SmartShunt is installed in-line with the negative battery cable of the battery system or bank that you wish to monitor. If you are designing a new system, refer to a wire size chart to determine the correct size cable to use in the installation. The cables should be sized for the lowest percentage voltage drop that is practical, and should not exceed 3%.

NOTE: Do not install any positive voltage-carrying wires to the SmartShunt studs - ONLY negative cables. The SmartShunt will not work on the positive side of an installation.

The SmartShunt should be located as close to the battery as possible, preferably within 12". The SG200 uses the SmartShunt to measure current, or how many amperes are going into or out of the battery. Because of this, you must ensure that no loads (like a bilge pump) or sources (like an inverter) are connected directly to the battery. ALL loads and sources MUST terminate their negative connection at or before the "CABLE" end of the SmartShunt. If there are multiple connections to be made, a buss bar can be installed directly prior to the SmartShunt.

NOTE: If you have a shore-power charger, inverter or inverter-charger, they may have both a Positive and Negative cable directly connected to the battery. The positive cable can stay, but the negative cable must be moved to a position at or before the "CABLE" stud on the SmartShunt.

Installation steps

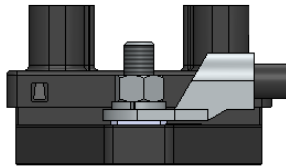
NOTE: The purpose of this manual is to enable the installer to install SG200 in a manner that permits it to operate as designed. This manual is not intended to educate the installer on the regulatory requirements of any particular type of installation. The manufacturer, supplier, dealer and/or their agents cannot know what the final installation will be and therefore cannot know what the regulatory requirements of such installation may be.

1. Determine a mounting location and mount the SmartShunt. The surface should be flat. Do not install the SmartShunt on a curved surface. Note that the cable connection bolts are not insulated on the underside of the SmartShunt and therefore cannot be mounted into a conductive surface.
2. Remove all loads and charging sources from the battery before any other steps are taken. This often is accomplished by turning off a battery switch. If there are loads or chargers directly attached to the battery, they should be disconnected as well.
3. Connect the negative cables to both sides of the studs, as shown below.

NOTE: In a simple installation, the battery Negative (-) cable is removed from the battery, and connected to the "CABLE" end of the shunt. Then a new, short cable is installed from the "BATT" (-) stud to the battery.

4. Re-install the lock washers and nuts on the shunt, the battery cable lug goes first, then the washer, and then the nut.

NOTE: DO NOT PLACE ANYTHING between the battery lug and the face of the shunt. Do not use nylock nuts in place of the lock-nut and washer.



5. Connect the 60" Power lead to the battery POSITIVE+ terminal. DO NOT EXTEND the wire from the fuse to the fuse holder, this must be kept short for safety reasons.

NOTE: The fuse holder is shipped without the fuse installed, install fuse AFTER completely connecting all of the wires/cables. and all other installation steps.

6. Connect the voltage sense leads to the auxiliary batteries. AUX-1 is a solid orange wire, and AUX-2 is orange/black. Each AUX lead needs to be fused within 6" of the battery. Fuses **MUST BE INSTALLED FOR THESE WIRES**, and are not included. The wires do not carry any current, so the fuse should be sized for the wire gauge and length. If you need to extend the wire, do so with at least 18ga wire.
7. If the auxiliary batteries being monitored do not share a common ground with the main battery bank connected to the shunt, a negative lead must be wired from the auxiliary battery's **NEGATIVE** post to the "CABLE" post on the shunt.
8. Determine the mounting location of the Display. The Display is weather-tight from the front, but not the rear. Do not install the display where the rear of the unit is exposed to water. The cutout hole is 2.0625in in diameter. The maximum depth of surface that is supported is 1/2 inch. Once the hole is cut, remove the nut, washer and mounting brace, insert the display from the front and then replace the brace. Tighten the nut by hand, and then 1/2 turn or so. If it is being mounted in a plastic dash, do not over-tighten the nut or you could risk cracking the dash.
9. Run the SmartLink cable from the shunt to the Display. Since one end has the Deutsch connector pre-terminated, and the other does not, it may be better to start from one end or the other, depending on the installation. Make sure that there is chafe protection if the cable passes through bulkheads. The cable should be supported every 18 inches.
10. Install the Deutsch-style connector onto the pins of the SmartLink Cable. See the following section that illustrates this procedure.

NOTE: DO NOT insert pins before reading these instructions entirely.

11. Connect the Smartlink cable to both the display and the shunt. You can connect to either connector on each device. Press the connector into the receptacle until it snaps into place.
12. Insert the included fuse into the fuse holder. At this point the display will power up, and be operational in a few seconds.

NOTE: You may add a new device at any time. However, you **MUST** remove and re-apply power to the entire network for the new device to be recognized.

Installing the Deutsch-style connector

The receptacles for the connector come pre-terminated onto each wire. They must be installed into the connector as shown below.

1. Slide the heat shrink tubing over the bare wires.
2. Slowly push the receptacle into the appropriate hole, until a clicking sound is heard.

Position	Color
1	Green
2	White
3	Red
4	Black



3. Inspect the receptacle from the face of the connector. The receptacles should be flush with the face of the connector



4. Install the wedgelock into the face of the connector. It will click into place.
5. Heat up the heat shrink tubing to lock it into place. The tubing is not needed for water tightness, but does provide chafe protection to the exposed wires.

When the wedgelock is in place, you should just be able to see the ends of the receptacles through the wedgelock. You can refer to the factory-installed connector for guidance.

Adding an additional device to the SmartLink Network

You may add additional Displays and/or SmartShunts to the SmartLink Network, up to total of 32 devices. Most SmartLink devices have two connectors available to allow you to extend the network in either direction. The network design is a simple, point-to-point network, there is no need to create a loop between devices.

Setting up Multiple SmartShunts on one Bank

Each SmartShunt can handle up to 350 amps continuously at ambient

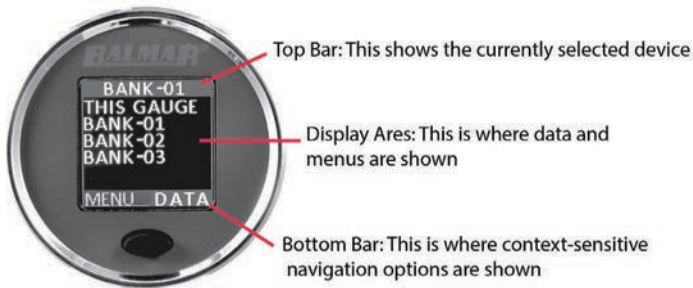
temperatures. If the charging sources or discharging loads exceed this value continuously, two or more SmartShunts in parallel must be used to handle the increased current. There are two steps to this process:

1. Physically connect the SmartShunts in PARALLEL. This means that each “BATT-” post on the SmartShunts must be connected together with an appropriate load carrying device. In addition, each “CABLE” post must also be connected together in a similar fashion. The easiest way to accomplish this is to use high-amperage carrying bus bars, with correctly sized cables for each.
2. Connect the two SmartShunts on the SmartLink Network via the Communications Cable.
3. Virtually connect the two SmartShunts together on the SmartLink Network so that they are considered one “Master” SmartShunt by the system. This is accomplished with the SG200 Smartphone App.

NOTE: DO NOT connect the shunts in series, one after the other. This will not increase the current carrying capabilities of the system, and will most likely lead to measurement inaccuracies and possible damage and/or fire if the current greatly exceeds the maximum current specification for one SmartShunt.

SG200 Layout and Operation

The SG200 has three main data display areas, as shown below.



Single Button Operation

The SG200 has a single button for ease of operation. A button press can be:

1. Short Press
2. Long Press (release as soon as screen flashes)
3. Extra-Long Press (about three seconds)

Short presses take you from one item on the screen to another. For instance, if the screen is showing Voltage, a single short press will change the screen to show Current in amperes.

A long press is used to make a selection or enable the editing of a value. As soon as you see flashing on the screen, you have made a long press and then release your finger.

EXAMPLE: If you are looking at a list of devices on the SmartLink network, you can use short presses to move from one device to the next. When you have the desired device highlighted, a long press will select the device, and show the real-time data for that device. Similarly, if you are again back at the list of devices, and use short presses to highlight “Setup”, a single, long press will take you to the setup menu for the selected device.

The extra-long press will take the user to the INTENSITY menu directly, where a dimming level can be chosen. Dimming is also managed by the power management function of the DISPLAY menu.

NOTE: If left on any MENU screen, the Display will revert to Real-Time Data after a time.

Real-Time Data

Once a SmartShunt is selected, the SG200 will display the Real-Time Data for that SmartShunt. If you have multiple SmartShunts that are not paralleled together for a single bank, selecting a different SmartShunt will allow you to view the data from that SmartShunt and battery-bank. You will see the SmartShunt bank selected on the top bar of the SG200 screen.

Here are some notes concerning the Real-Time Data parameters:

Parameter	Unit	Note
Voltage	Volts (V)	Time
State of Charge (SoC)	Percent (%)	SoC is a percentage of the actual full-charge capacity of the battery, NOT the design capacity Also, See the section "Initial Accuracy"
State of Health (SoH)	Percent (%)	SoH is the battery's existing, or actual aged capacity compared to the initial design capacity.
Current	Amps (A)	Shows the NET of simultaneous charge, minus any discharge.
Time Remaining	Hours: Minutes	Shows time remaining until battery is completely discharged when the battery is discharging. When charging, shows the time until charge completion. .
Voltages for two separate Auxiliary batteries	Volts (V)	Typical usage would be the starter battery for one or two engines, or a single engine and generator.

NOTE: If SoH drops to zero after initially showing a different value, the battery may have a bad cell. If there are multiple batteries installed in a parallel bank, the voltage of each battery should be taken individually, as there may be a bad battery in the battery bank.

Setting up the SG200 for the First Time

When the SG200 Display is first powered up, a splash screen is shown. Pressing the button once will take you to either a screen where you can select the device to be monitored (If two SmartShunts are installed, for instance), or directly to the Real-Time Data if the only devices on the network are a single Display and a single SmartShunt. Before the SG200 can be used, you must configure the bank for the correct battery chemistry and the capacity of the battery bank.



Each SmartShunt on a SmartLink Network has its own menu. If you only have one SmartShunt, it is automatically selected for you. Otherwise, select the SmartShunt that you wish to configure (Using the long-press method) and then select MENU, and then CONFIG. A complete description of the configuration options can be found in the CONFIG section later in this manual.

Initial configuration of the SmartShunt consists of setting the following parameters:

- Battery Chemistry
- Battery Capacity
- Charge Termination Current and Voltage

The default chemistry is FLOODLA with a capacity of 100Ah.

Initial Accuracy

The SG200 is a self learning product. It continuously monitors the battery bank, and self adjusts over time to improve the accuracy of the two most important parameters, State of Health (SoH) and State of Charge (SoC). On new battery systems, both the State of Health and the State of Charge values may be very close to accurate after the first full charge and a brief relaxation period. This is because the stored characteristics of each battery chemistry is made with healthy batteries. If the batteries are older, it will take a few cycles before these values can be relied upon, and you may see significant changes in these values during this time.

NOTE: The accuracy of the voltage and current measurements are calibrated at the factory and do not change over time.

Display



The Display menu allows for the configuration of the Display's colors, intensity and power usage.

MENU OPTION	DESCRIPTION
INTENSITY	Change the brightness of the color display
THEME	Change the color theme used on the display
PWR SAVE	Choose four power saving combinations of the Color Display, using timeout duration, and whether the Display is dimmed or turned off after timeout
TEST	Run through a test of the Color Display

NOTE: Regardless of the INTENSITY or PWR SAVE options selected, the SG200 Color Display will turn off the backlight after 12 hours of non-use to conserve power.

History



The HISTORY sub-menu shows the following

MENU OPTION	DESCRIPTION
VIEW HISTORY	Displays minimum and maximum values for the following parameters: Voltage, Current, SoC, SoH, Power (Watts)
VIEW FAULTS	Displays details on all faults recorded on the device.
CLR HISTORY	Reset the min-max values in HISTORY to the current values of those parameters.



Viewing HISTORY steps the user through the minimum and maximum values recorded of the real-time data parameters. An additional set of values is shown here for POWER, expressed in watts.

When selecting FAULTS, you can select to view either current faults (if the condition leading to a fault is still present) or view information about the last fault of each type, as well as a counter showing how many times that particular fault has been triggered. See faults in FAULTS AND ALERTS for more information on faults.

Config

The CONFIG menu has the options listed below:

CONFIG OPTION	DESCRIPTION
BAT. TYPE	Select the battery chemistry
CAPACITY	Set the battery capacity in Ah
CHARGING	Configure charging parameters
ALERTS	Configure ALERT thresholds



BAT TYPE - Selecting the Battery Chemistry

The SG200 uses profiles for each common battery chemistry. It is important to select the chemistry that most closely represents the batteries being monitored. All batteries on the bank being monitored by the SmartShunt should be the same size, age and chemistry. If they are not, the SG200 may not present accurate information.



The currently selected battery type is noted with an asterisk (*) in front of the name. The default is FLOODLA (see the chemistry table). If this is your chemistry and the installation is new, you may either re-select the chemistry, ensuring that the SG200 is starting fresh, or exit back to MENU and move to the next step.

Chemistry Number	Chemistry Name	Description
00	FLOODLA	Flooded (Wet) Lead Acid
01	AGM	AGM
02	CARFOAM	Carbon Foam AGM
03	LIFEPO4	Lithium Phosphate
04	DUALPUR	Dual Purpose Lead Acid
05	AGMTPPL	Thin Plate Pure Lead AGM

NOTE: Every time a chemistry is selected, all learning is lost, even if you re-select the currently used chemistry. This will mean that the SG200 will need a few charge cycles to obtain peak accuracy.

NOTE: If you are uncertain which battery chemistry to select, please contact Balmar Customer Support: <http://www.balmar.net/contact-technical-services/> or 1-360-435-6100

CAPACITY - Selecting a Battery Design Capacity

Once you select a chemistry, you must specify the capacity of the battery bank. This is the total design capacity of the entire bank, regardless of the battery's condition, or previously measured capacity. Typically the capacity is expressed as the 20-hour discharge rate. This may be written as something like "105Ah/20h" on the battery or battery documentation. If you cannot find an Ah specification for your battery, but it does show a reserve capacity (RC) refer the Appendix "Converting Reserve Capacity to Amp Hours." CCA or MCCA values are not describing capacity and cannot be used to determine the battery capacity.

EXAMPLE: Consider three Group 31 batteries, each with a design capacity of 100 amp hours. They are connected in parallel to make a 12v, 300Ah bank. The design capacity to be entered is 300. Even if the batteries are older, and they have diminished in capacity, the bank capacity should always be entered as a design capacity.



To set the capacity, use a short press to highlight the digit to be changed. Once it is highlighted, a long press will allow you to edit that digit, then a short press to increment the value up. When you have that digit set to the correct number, another long press will exit the edit mode for that digit, and move to the next. Do the same for all digits that need adjusting. When the value is correct, move the highlight to DONE on the bottom menu bar and perform a long press. The design capacity is now saved. If the design capacity is changed at any time, the system resets and any battery learning (described in “Initial Accuracy”) is lost.

CHARGING - Charge Termination and Charge Efficiency

The CHARGE VOLTAGE and TAPER CURRENT are used together by the SG200 to determine when charge termination has occurred. This is indicated on the Display when a “+” sign shows on the SoC Display. Charge Termination is defined as when the battery is fully up to 100% of it’s present capacity. Each of these values have defaults that are set per chemistry, but can be changed if required.

Selecting the CHARGING menu item brings up a sub menu, where the following options can be set:



NOTE: Each chemistry has default settings for the CHARGE values. If you are unsure of these settings, leave them at the default unless you have a reason to change them.

Menu Option	Description
CHARGE V	CHARGE VOLTAGE - Used in conjunction with Taper Current to determine when full charge has been reached. The charging voltage must reach this Voltage and the current must be BELOW the Taper Current set. Set this value to SLIGHTLY LOWER than the current your charging source reaches at the end of the absorption stage, before it switches to FLOAT .
TAPER CURR	TAPER CURRENT - Used with the Charge Current to determine when a full charge has been reached. As a general rule it should be set to slightly higher than the actual taper current, often about 2-4% of the Full Charge capacity of the battery
PEUKERT	PEUKERT QUOTIENT VALUE - The default value for each chemistry should only be changed if a different value is provided by the battery manufacturer.

If the CHARGE VOLTAGE has been reached AND the current flowing to the battery is less than the TAPER CURRENT then the SG200 changes the State of Charge to 100% as it considers charging to be complete. If you find that the battery is still charging when this happens, check your CHARGE VOLTAGE and TAPER CURRENT values. You can raise the CHARGE VOLTAGE or TAPER CURRENT (or both) in small increments to more closely match the period between the SG200 setting the SoC to 100% and the actual end of charge current. If these values are not correct (CHARGE VOLTAGE too high, or TAPER CURRENT too low, or both) then the SG200 may not be able to properly update the State of Health.

Advanced Settings



The advanced menu for any SmartShunt allows the user to perform several levels of reset of SmartLink devices on the network. An explanation of each of options is in the table below:

Menu Option	Description
RESTART DEV	RESTART DEVICE - Reboots the device (a Display or SmartShunt) that is currently selected (Shown at the top of the screen).
RESET NETWORK	RESET NETWORK - Resets the SmartLink network. Learning, chemistry, faults etc are retained.
FACTORY RST	FACTORY RESET - Performs a FULL reset of the device. ALL history, including faults, chemistry, capacity, learning etc is reset. Performing a Factory reset on device, does not perform a reset on any other devices or SmartShunts on the network. A Factory Reset should be performed every time a battery bank is replaced.

Performing a long press on any of the advanced settings immediately performs that function, except for FACTORY RESET, which has a confirmation step to help avoid false resets.



Faults and Alerts

Alerts

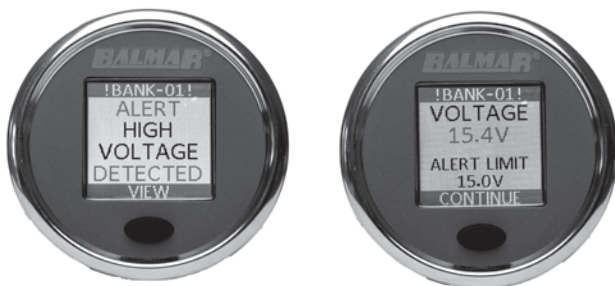
Alerts are used to notify the user when a particular threshold on a parameter is passed. For instance, an alert can be set for when the State of Charge exceeds 90%, but also when it drops below 50%. High and low values can be set for most parameters. Alerts can also be disabled entirely. For instance, most users won't need an alert to signify when a low current level is reached. The default for each alert is disabled.

Alerts can be set for the following conditions:

Alerts (User Defined)
Min/Max State of Charge (SoC%)
Min/Max Current (A)
Min/Max State of Health (SoH%)
Min/Max Voltage (V)
Min/Max Aux-1 & Aux-2 Voltage (V)
Min/Max Mins Left (minutes)

Generally, Alerts are used to notify the user that a certain condition has occurred, and are not only used to signify a problem. For instance, you could set an alert on State of Charge, to let you know when a battery is charged to a specific point, so you can shut down a generator or other charging device.

When an Alert occurs, the screen immediately displays a notification that this has happened. Pressing the button will then show the parameter that is being Alerted, the value reached, as well as the threshold that was set for the value.



To set an alert, ensure you have the correct SmartShunt selected (the device name shows on the top bar) and select ALERTS from the CONFIG menu.



First, select the type of alert you wish to configure, then if you wish to configure for a high or low value. Once selected, you can change the value one digit at a time, using the same method used to configure the battery capacity.

NOTE: When a HIGH value is configured, the parameter must exceed the set value for the ALERT to be triggered. When a LOW value is configured, the parameter must fall below that value for the ALERT to be triggered.

Faults

Faults are triggered when specific values have been passed that may have an impact on safety or the health of the battery. For example, draining a battery down to less than 5% SoC will trigger a fault, as it can adversely affect the life of a battery. Exceeding the safe current carrying ability of the SmartShunt will also trigger a fault. Faults can help a user identify behavior that will shorten the life of a battery. Faults can only be cleared from History with a Factory reset.



The values used to trigger Faults are contained in the Appendix named Fault Thresholds

Fault History is accessed from within the History Sub-menu, see History.

NOTE: The High Voltage Fault threshold for flooded batteries may be higher than a safe voltage for operating electronics and other equipment. This is to allow for the equalization of batteries without triggering a Fault. For this reason, it is important to set and use a High Voltage Alert to let the user know when potentially battery-damaging voltages are sensed.

Comparing Faults and Alerts

Here is a summary of some differences between Faults and Alerts:

1. Alerts are user-configurable; you can enable and disable alerts and change their trigger points.
2. When an alert condition has passed, the alert does as well.
3. Faults are not user configurable.
4. Faults show a time since occurred, duration for the latest fault, and the number of total times that fault has occurred.
5. Faults have history. When a fault is viewed, it is cleared from the screen. The parameters for the last instance of a fault and a counter showing the total times that fault occurred are stored.

Specifications

Standard Configuration	1 Bank per SmartShunt Device 2 Start/Auxiliary Voltage Sense Lines (Up to 32 Devices including Displays and SmartShunts can be added to single network.)
Supply Voltage Range	8-60V
MAX Bank Current-Monitored Battery Size	1Ah-1310Ah
Average Supply Current	Display On: 20mA @ 12V Sleep Mode: 10mA @ 12V
SmartShunt Operating Temperature:	-40°C - +85°C (-40°F - +185°F)
SmartShunt Max Current @ 24°C (75°F)	350A Continuous 600A for 10 minutes
Display Values	State of Charge (SoC%) State of Health (SoH%) Voltage (V) Charge/Discharge Current (A) Time Remaining (Hrs, Minutes) History, Faults and Alerts
Communications Cable	4-wire, 22AWG, Shielded 4-pin Deutsch DT Style
Grounding	Negative Battery Connection
Standards Compliance	CE EMC Directive 2014/30/EU RoHS 2 Directive 2011/65/EU
SmartShunt Dimensions	Length: 4.86" (123.7mm) Width: 3.34" (84.8mm) Height 2.01" (50.9mm)
Gauge Minimum Depth (with connector)	2.75 inches, 70mm
Weight	SmartShunt: 0.62 lbs Color Display: 0.16 lbs
Maximum Panel Depth for Gauge Installation	1/2 inch (12.7mm)
Protection Rating	IP65 (Display from Front) IP67 (SmartShunt)

NOTE: If equalizing a 48V system the SmartShunt must not be powered, as the electronics may be damaged by voltages over 65V. Please remove the fuse on the SmartShunt power lead.

NOTE: The SG200 should not be used on 48V systems that are operated in extreme cold environments. In this case, a temperature-compensated charger may use voltages over the safe operating voltage of the SG200.

Part Numbers

Part Number	Part Description	Includes
SG200	Battery Monitor Kit, 12V-48V	Standard Unit for Initial Purchase: Includes, Color Display, SmartShunt, SmartLink Com Cable
SG2-0100	SmartShunt SG200, 350A, 12V-48V	Add a SmartShunt for Additional Bank: Includes SmartShunt and SmartLink Com Cable
SG2-0200	Color Display SG200, 2 1/16"	Add a Color Display to an existing SmartLink Network
SG2-0300	Gateway, SG200, Bluetooth®	Optional 39" Bluetooth® Gateway for Smartphone App
SG2-0400	Com Cable, SG200, 10m	Optional SmartLink Com Cable (10 meter) for Longer Cable Runs

Fault Thresholds

FAULT	Flooded	AGM	TPPL	CARFOAM	LIFEPO4	GEL	Dual Purpose
High Voltage	16.3	15	15	15	14.3	14.4	15
Low Voltage	10.5	10.5	10.5	10.5	13	10.5	10.5
Low SoC	5	5	5	5	5	5	5
Low SoH	20	20	20	20	40	20	20
High Current	351A (Scales with multiple SmartShunts in Parallel)						

Converting Reserve Capacity to Amp Hours

The following formula converts Reserve capacity, typically expressed in minutes drawing a 25 amp load, to Amp hours at the 20/HR rate.

$RC(60) * 25 / 3600$

Multiply Reserve Capacity to 60 to convert to seconds

Multiply by 25 to convert to coulombs

Divide by 3600 to convert coulombs to amp/hours

Example:

We have a battery showing reserve minutes of 130

$130 * 60 = 7800$

$7800 * 25 = 195,000$

$195,000 / 3600 = 54.16$

We have a battery showing reserve minutes of 130

$130 * 60 = 7800$

$7800 * 25 = 195,000$

$195,000 / 3600 = 54.16$

Factors Affecting Battery Life

State of Health

As batteries age, their overall health diminishes. The biggest sign that a battery's health has declined is seen as reduced capacity. Without the SG200, the easiest way to see if this is happening is to monitor the time it takes a battery to charge using the same charging source. If the time to charge decreases over time, it is because the capacity has diminished. All lead-acid batteries age due to sulfation as well as shedding, where lead falls off of the plates and settles on the bottom of the battery.

There are several factors that affect the health and lifespan of a battery or battery bank. For most lead-acid batteries, the two most important factors affecting lifespan are depth of discharge/cycle count, and the concept of fully charging the battery after each discharge. Each of these effect the mechanical and chemical properties of batteries.

Sulfation and Shedding

At the mechanical/chemical level, there are two primary conditions that reduce the life, or State of Health of a battery. They are Sulfation and Shedding. Sulfation occurs when lead sulfate, formed naturally during battery use, is converted to a more stable crystal form that covers the negative lead plates in a battery. This happens when a lead acid battery is left in a partially charged state. Different battery manufacturers have devised different methods and chemistries to combat this effect, with varying degrees of success. Sulfation is accelerated by Partial State of Charge (PSOC) cycling and deeply discharging batteries.

Shedding is another naturally occurring phenomenon. During use, lead is shed from the plates and falls to the bottom battery. When enough lead has gathered, a partial-short starts to occur in the battery which will drain the capacity on it own and hasten the battery's demise.

In extreme instances, a battery can suffer a mechanical failure internally and will quickly short a cell with no chance of recovery. When this happens the battery must be replaced. If left in place the other cells can be overcharged, risking excessive heat and fire.

Cycle Life

Batteries are rated to show how many charge/discharge cycles they are able to endure before their health falls to a point where replacement is necessary. This is typically expressed as XX # of cycles to XX% discharge. It means that if you discharge to a lower value each time before re-charging, the total times this is done is lower than if the battery is only discharged a smaller amount each time. Of course, this is in a laboratory setting, as nobody discharges their batteries to a set point each time before re-charging, and many other factors will contribute to how long a battery lasts. For lead acid batteries, these also include:

1. Ambient temperature.
2. If the battery is fully charged after discharge and how much time passes between the two steps.
3. If the battery is actually fully charged, instead of “Almost fully charged”
4. If the battery is over charged, at voltages higher than the manufacturers recommendations

These factors together mean that in real-life applications, most batteries never reach the cycle life proposed by manufacturers.

Partial State of Charge (PSOC) Cycling

All lead-acid batteries benefit from being fully charged back to 100% after each use. PSOC means discharging a battery to some point, and then not fully charging back to 100%, before discharging again. For some users, this is not an issue as their batteries are not often left in a partial state of charge. Boaters using battery powered trolling motors typically charge their batteries fully right after use. For others, perhaps boondocking in an RV or cruising (and anchoring) in a sailboat, this plays an important part in battery usage. Current wisdom says when 24/7 charging is not available for lead acid batteries (including AGM) the best balance between cycle life and maximizing capacity is to discharge the batteries to 50%, and then charge back up to 80%. Then, perhaps once week, charge up to 100%. As batteries close in on around 80% charge, the current they accept diminishes. This means that the time it takes to get the last 20% into a battery can become excessive. This becomes clear when running an engine or generator to charge batteries.

Balmar Warranty

Balmar's Limited Warranty covers defects in material or workmanship on new Balmar products generally for a period of two (2) years from the purchase date. Only consumers or dealers purchasing Balmar products from authorized retailers or resellers and installed by a qualified installer may obtain coverage under Balmar's Limited Warranty. Components with a manufacturing date greater than ten (10) years old are not covered under the Balmar Warranty, even if the purchase date has been within the past two (2) years. Purchases from unauthorized resellers, which may include some online entities, may not guarantee the purchaser will receive a newly manufactured component, and therefore does not guaranty Warranty coverage.

Warranty Resolution

If Balmar authorizes a product to be returned to Balmar or an authorized service provider, Balmar will repair the product or replace it without charge with a functionally equivalent replacement product. Balmar may replace the product with a product that was previously in service or repaired, but re-tested to meet Balmar specifications. Balmar will pay to ship the replacement product to the purchaser. by sending the product for replacement, ownership of the original product will be transferred to Balmar. Labor charges at the consumer's site are not covered under this Warranty. Balmar warrants that repaired or replaced products shall be covered under the Balmar Warranty for the remainder of the original product warranty, or 90 days, whichever is greater.

Not Covered Under Warranty

Balmar's Warranty does not cover any problem that is caused by (a) an accident, abuse, neglect, exposure to shock electrostatic discharge, heat or humidity beyond the product's specifications, improper installation, inappropriate operation/misapplication, maintenance or modification, or (b) any misuse contrary to the instructions provided with the product, or (c) loss, or (d) malfunctions caused by other equipment, or (e) acts of God. Examples of conditions not warranted: cracked or broken case, parts damaged by fire, water, freezing, lightening, collision, theft, explosion, rust, corrosion, or items damaged in route to Balmar for repair. Balmar's Warranty is void if a product is returned with removed, damaged or tampered labels or any other alterations (including removal of any component or external cover) to the product. Balmar's Warranty does not cover labor charges or any direct, consequential, or incidental damages. Costs related to recovery removal or installation are not recoverable under the Balmar Limited Warranty.

Applicable Laws

Balmar's Warranty is governed by the laws of the State of Alabama, USA. The Balmar Warranty provides the purchaser specific legal rights, and you may also have other rights that vary from state to state. Balmar's Warranty does not affect any additional rights consumers have under laws in their jurisdictions governing the sale of consumer goods, including, without limitation, national laws implementing EC Directive 44/99/EC. Some states do not allow the exclusion of limitation of incidental or consequential damages, so the limitation of exclusions of Balmar's Warranty may not apply in certain jurisdictions.

Warranty Return Material Process

1. Contact Balmar Technical Support at +1 (360) 435-6100. Tech Support will review the troubleshooting steps with you to help determine if Balmar's product is defective.
2. Go to www.balmar.net and download the RMA request.
3. Once complete, you will receive an RMA number, at which point you should complete the forms and send them with the product and the original receipt showing the date of purchase to Balmar at the address listed below. Please include the RMA number on the outside of the package.
4. Please send the product postage prepaid via a carrier that can track the package.

Balmar LLC
353 James Record Road SW
Huntsville, AL 35824
Attention: Warranty
Returns RMA# _____

Once Balmar receives the product, we will test the product to determine if the problem is due to a defect in the product. If, at the sole discretion of Balmar, the problem is determined to be a manufacturer defect, Balmar will repair the product or send a new product to replace the defective product.

Balmar will not provide Warranty coverage unless Warranty claims are made in compliance with all the terms listed here, and the specified return procedures are followed.

NOTES

NOTES

BALMAR[®]

DC CHARGING SOLUTIONS

**Balmar Knows How To
Charge Your Batteries**

BALMAR[®]
DC CHARGING SOLUTIONS

Balmar LLC
15201 39th Avenue NE
Marysville, WA 98271
USA
+1 (360) 435-6100
www.balmar.net



CDI
Electronics[®]

CDI Electronics LLC
353 James Record Road SW
Huntsville, AL 35824
USA
+1 (256) 772-3829
www.cdielelectronics.com



CDI Electronics designs and manufactures ignition components for outboard motors and diagnostic software for most Marine Engines. CDI enjoys relationships with 70 distribution partners around the world. To Find a CDI distribution partner, **visit www.cdielelectronics.com**.

Both Balmar and CDI Products are manufactured in our ISO 9000-Certified Factory in Huntsville, Alabama.

Please read carefully. All policies, procedures and instructions are subject to change. This guide was prepared to provide information and does not constitute a contract. Balmar reserves the right, without prior notice, to change, delete, supplement, or otherwise amend at any time the information and policies contained in this guide.

For the most recent information about Balmar's products, policies and instructions please visit, **www.balmar.net**.

